

FOR SUBLEASE

Anchor Space Available Children's Hospital Thrift Store National City Plaza



Northwest Corner at
Euclid and Division, National City

Features:

- Approximately 120,000 s.f. grocery anchored shopping center
- Situated in the heart of the National City trade area.
- Project is centrally located in a densely populated well established neighborhood.
- Co-Anchor space Available - 15,000 s.f.
- Below market rent - Year 1: \$.70 NNN
- Two year left on initial term with two (5) year options.
- Abundant onsite parking.

Additional Features

DEMOGRAPHICS:	<u>1 mile</u>	<u>3 mile</u>	<u>5 mile</u>
Population:	36,368	229,506	559,091
Avg. HH Income:	\$44,817	\$49,696	\$51,299
TRAFFIC COUNT:	Euclid St.:	16,800	
<small>Cars per day, SANDAG 2001</small>	Division St.:	<u>9,200</u>	
Total Daily Traffic Count:		26,000	

Contact for Information:

Dan Malcolm

Senior Vice President

Phone (858) 453-9990

Fax (858) 453-9965

Email: malclaw@rpgcommercial.com



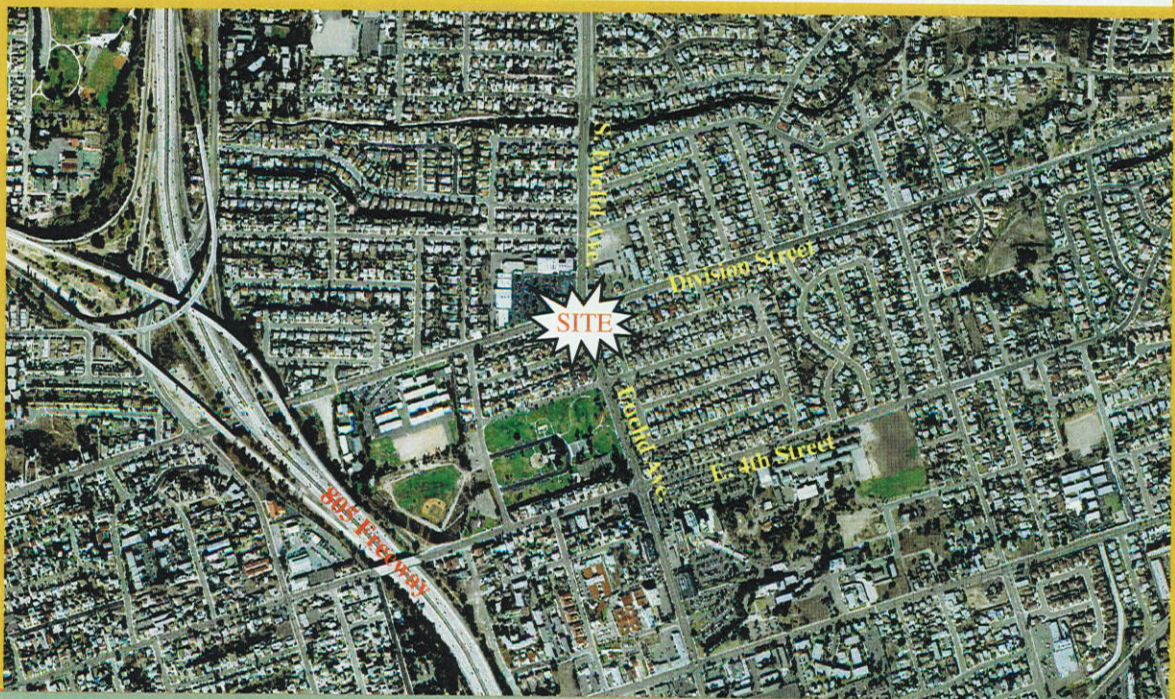
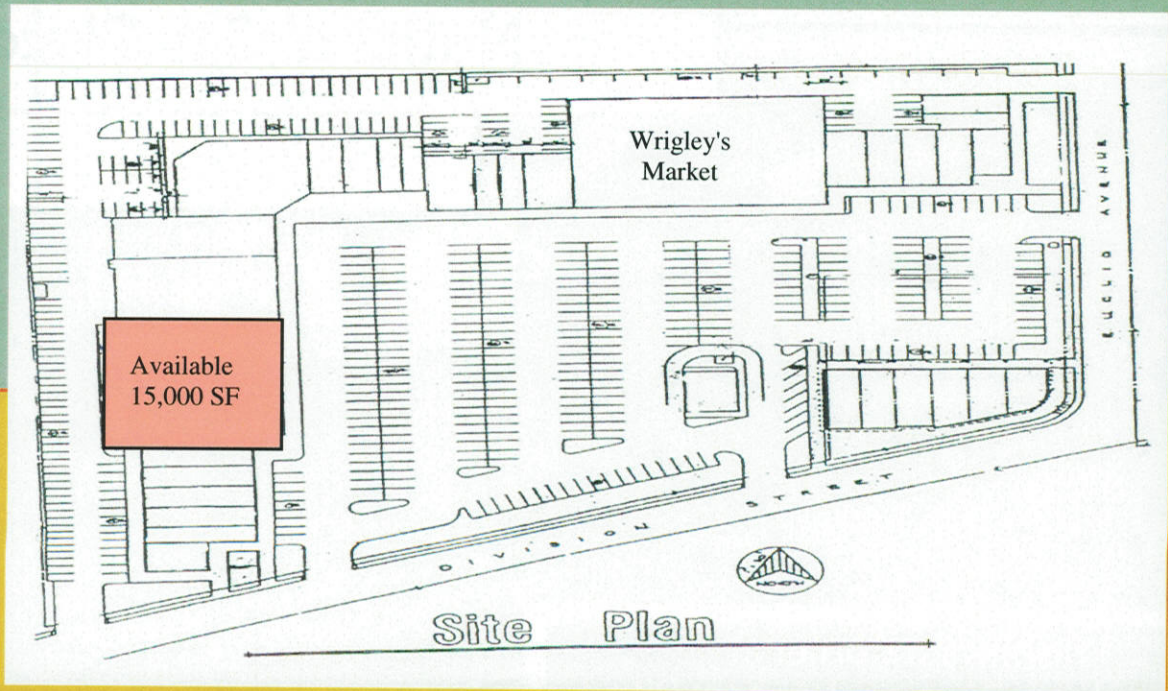
Retail Properties Group, Inc.

3262 Holiday Court Suite #100

La Jolla, CA 92037

The information herein has been obtained from sources believed to be reliable. While we do not doubt its accuracy, we have not verified it and make no guarantee, warranty, or representation about it. It is your responsibility to independently confirm its accuracy and completeness. You and your advisors should conduct a careful independent investigation of the property to determine to your satisfaction the suitability of the property for your needs.

SITE PLAN AND AERIAL



Contact for Information:

Dan Malcolm
Senior Vice President
Phone (858) 453-9990
Fax (858) 453-9965
Email: malclaw@rpgcommercial.com



RETAIL PROPERTIES GROUP, INC.
3262 Holiday Court Suite #100
La Jolla, CA 92037

The information herein has been obtained from sources believed to be reliable. While we do not doubt its accuracy, we have not verified it and make no guarantee, warranty, or representation about it. It is your responsibility to independently confirm its accuracy and completeness. You and your advisors should conduct a careful independent investigation of the property to determine to your satisfaction the suitability of the property for your needs.