

FOR LEASE

Clairemont Village Shopping Center



*SEC of Clairemont Drive and Burgener Blvd.
San Diego, CA 92117*

Project Size: Approx. 127,155 s.f.

Comments:

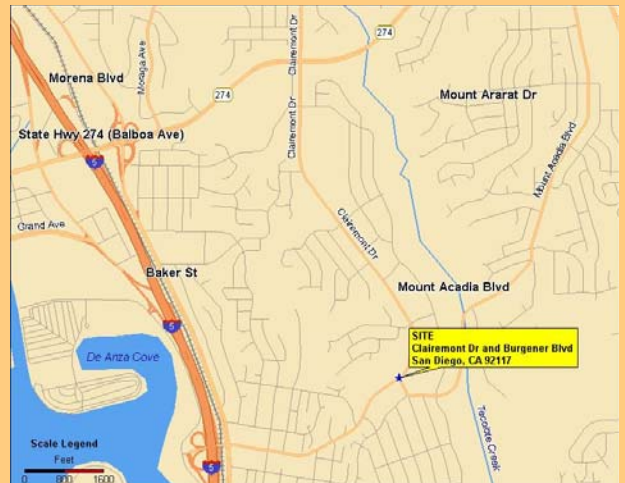
- 680 s.f. to 3,120 available
- Excellent visibility and access to 1-5 corridor
- Anchored by Kiel's Grocery Store and Rite Aid
- Other tenants include Blockbuster, Hometown Buffet, McDonald's and Carl's Jr.

Traffic Counts:

(Sandag, 2003)

Cars per day

<i>Clairemont Drive</i>	<i>27,300</i>
<i>Burgener Blvd.</i>	<i>15,400</i>



Contact for More Information:

Dan Malcolm

Senior Vice President

Phone: (858)453-9990

Email:

Malclaw@rpcommercial.com

**3262 Holiday Court, Ste. 100
La Jolla, CA 92037**

AVAILABLE
RPG
RETAIL PROPERTIES GROUP, INC.

SITE PLAN



Contact for More Information:

Dan Malcolm

Senior Vice President

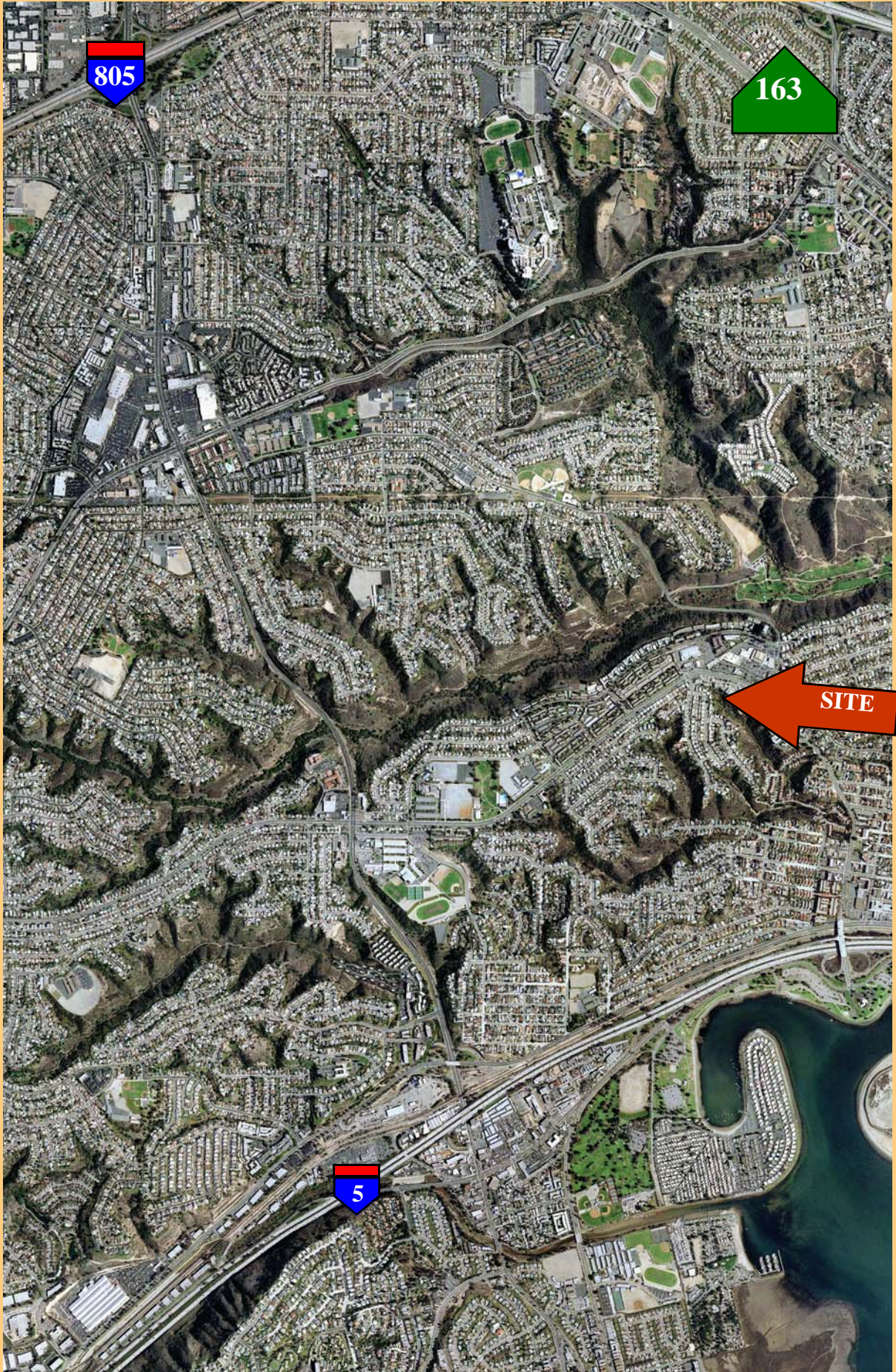
Phone: (858)453-9990

Email:




Malclaw@rpgcommercial.com

AVAILABLE
RPG
RETAIL PROPERTIES GROUP, INC.

3262 Holiday Court, Ste. 100
La Jolla, CA 92037



DEMOGRAPHICS

	Clairemont Dr AT San Diego, CA 92117 Radius: 1.0 miles	Clairemont Dr AT San Diego, CA 92117 Radius: 3.0 miles	Clairemont Dr AT San Diego, CA 92117 Radius: 5.0 miles
Latitude:	32.7944		
Longitude:	-117.1942		
	2000 Total Population	16,665	146,958
	2000 Group Quarters	9	3,746
	2005 Total Population	16,992	151,694
	2010 Total Population	17,862	160,156
	2005 - 2010 Annual Rate	1%	1.09%
	2000 Households	7,426	61,633
	2000 Average Household Size	2.24	2.32
	2005 Households	7,512	63,196
	2005 Average Household Size	2.26	2.34
	2010 Households	7,870	66,651
	2010 Average Household Size	2.27	2.34
	2005 - 2010 Annual Rate	0.94%	1.07%
	2000 Families	4,194	32,234
	2000 Average Family Size	2.8	3.01
	2005 Families	4,238	32,858
	2005 Average Family Size	2.82	3.03
	2010 Families	4,435	34,573
	2010 Average Family Size	2.84	3.05
	2005 - 2010 Annual Rate	0.91%	1.02%
	2000 Housing Units	7,592	63,936
	Owner Occupied Housing Units	56.9%	46.3%
	Renter Occupied Housing Units	40.9%	50.1%
	Vacant Housing Units	2.2%	3.6%
	2005 Housing Units	7,670	65,462
	Owner Occupied Housing Units	58.3%	47.4%
	Renter Occupied Housing Units	39.6%	49.1%
	Vacant Housing Units	2.1%	3.5%
	2010 Housing Units	8,031	69,007
	Owner Occupied Housing Units	58.1%	47.4%
	Renter Occupied Housing Units	39.8%	49.2%
	Vacant Housing Units	2.0%	3.4%
	Median Household Income		
	2000	\$47,921	\$45,216
	2005	\$55,879	\$52,501
	2010	\$65,829	\$62,094
	Median Home Value		
	2000	\$244,143	\$217,458
	2005	\$612,911	\$539,130
	2010	\$824,416	\$723,358
	Per Capita Income		
	2000	\$26,986	\$24,234
			\$27,283